



NEW! model 900

The Townsend **TRAVELER**

FLUSH TOILET SELF PRESSURIZING WATER SUPPLY

ONE STEP FLUSHING OPERATION

For

- TRAVEL TRAILERS
- COTTAGES
- WHEREVER COMPACT TOILETS ARE REQUIRED

MODEL 900

WITH BUILT-IN ANSWERS

TO PRESSURE — the elevated water storage tank creates its own consistent water pressure similar to the convenient household toilet.

TO WATER SUPPLY — varying water pressure does not bother the operation of this unit. It builds its own pressure by gravity feed. This means even if there is complete pressure failure this unit can be flushed by removing the tank top and filling the tank manually, then operate as normal.

TO DEPENDABILITY — this quality engineered unit is designed for simplicity with fewer working parts. The base is made of polypropylene. Its rigidity and corrosive resistance help it to withstand any abuse. All working parts are stainless steel and bronze.

Designed with the household water closet in mind, Townsend Products engineered a convenience parallel in efficiency, but compact in size. The variation in water tank pressure in travel trailers has no effect on this model. It builds its own pressure by gravity feed as in the proven residential type unit. Add a quality water closet to your trailer line, the Townsend Model 900, TRAVELER.

WPOA APPROVED

SUGGESTED LIST PRICE \$73.00

★ **SPACE SAVER**

This unit will fit into a 14" x 20" space to make that space the most convenient, operational, best utilized space in any travel trailer.

★ **ECONOMICAL**

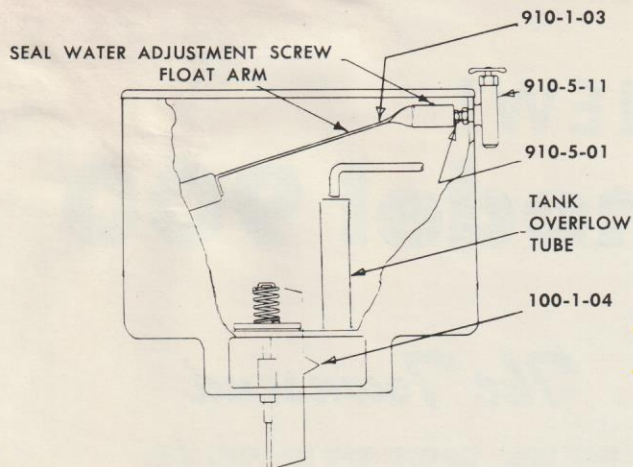
Model 900 is economical in its use of water, in its need for new parts, in its price, and maintains the highest quality standards at a price that is competitive.



Manufactured and Sold By
TOWNSEND PRODUCTS CORP.

182 AVENUE D • ROCHESTER, N. Y. 14621

Phone 716-342-7530



TANK

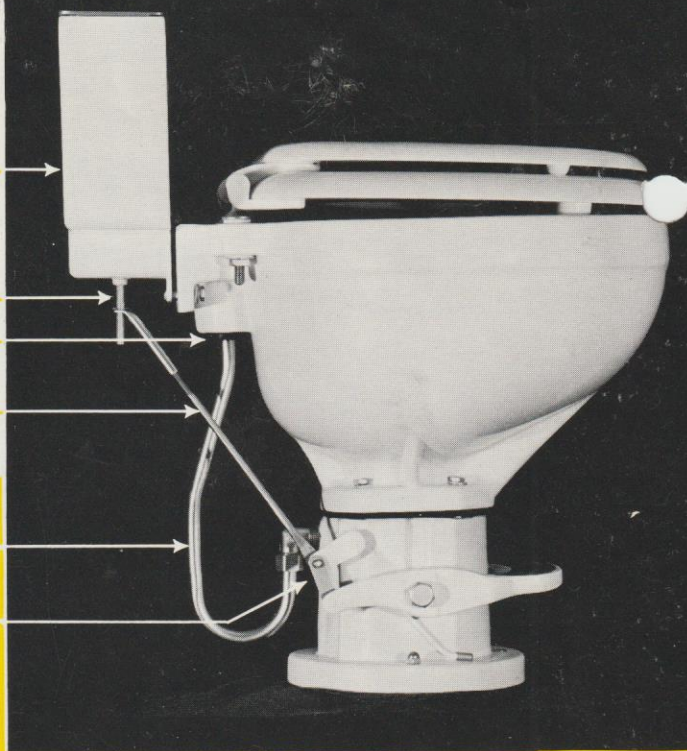
FLUSH VALVE STEM

RUBBER GROMMET

FLUSH ROD

OVERFLOW
DRAIN TUBE

VALVE LEVER



MAJOR PARTS LIST

PART NO.	DESCRIPTION
910-5-12	china bowl base assembly complete (catalogue sheet # 100-9-05)
810-5-28	seat and cover
910-1-07	flush rod
910-1-06	bowl overflow drain tube
910-1-02	tank assembly complete (see below for repl. parts)

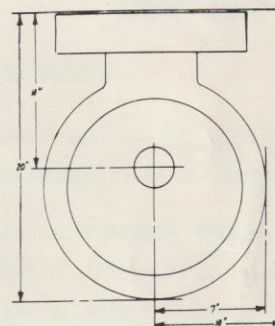
TANK REPLACEMENT PARTS

PART NO	DESCRIPTION
910-1-03	ballcock complete — less supply valve
910-5-01	ballcock valve
910-5-11	supply valve
100-1-04	replacement flush valve complete with seat and spring
910-3-02	tank to bowl gasket

INSTALLATION

1. Fasten the plastic base to the floor either by bolting it to a floor flange or by screwing it on a 3" drain pipe and then fastening it to the floor with the wood screws provided.
2. Install the black rubber seal ring on the top of the base so that the bowl mounting studs project through the holes in the ring. Mount the bowl on the base and fasten it with a rubber washer, a metal washer and a nut on each stud. Turn all four nuts down finger tight, then use a wrench or pliers on each successively until they are tight. Do not over-tighten or you might crack the china bowl.
3. Fasten the tank to the bowl with washers and nuts in the same manner as described in step No. 2. When installations are close to the back wall it may be necessary to fasten the tank to the bowl before mounting the bowl. Do not over-tighten nuts and make sure the tank is square with the bowl.
4. Connect the overflow drain tube by first pushing the rubber grommet into the hole at the rear of the bowl. Then wet the straight end of the tube and push it through the grommet. Connect the loop end to the compression fitting at the rear of the toilet base. (See photograph above.)
5. Install the flush rod by inserting the hole at the large end over the flush stem under the toilet tank. Remove E nut at the inside of the valve lever and slip the lower end of the flush valve rod over the stud on the valve lever. Replace the nut. The flush rod is factory adjusted, but if it needs adjustment, unscrew or screw together rod parts. The rod should be long enough to open the flush valve at least one half inch, but not too long so that the end of the flush rod hits the lower end of the tank when the pedal is fully depressed.
6. Connect the water supply line at the right hand side of the tank to the valve. Use $\frac{3}{8}$ " outside diameter tubing.

OPERATION



The TRAVELER is flushed by depressing the foot pedal and holding it down until the bowl is rinsed. The amount of flush water used is controlled by bending the float arm, in the water tank, up or down until the correct level is reached. The level should be approximately one inch below the top of the tank overflow tube. The amount of seal water replaced in the bowl after each flush can be adjusted by turning the ballcock seal water adjustment screw up for more water and down for less water. The supply water valve should be off when the trailer is in motion.