

# OPERATION and MAINTENANCE INSTRUCTIONS for YOUR



**YOU ARE NOW THE PROUD OWNER OF A SHASTA.** You are to be commended for your wise decision. More people buy Shasta than any other travel trailer. With twenty-four years trailer engineering experience behind it, your Shasta is built in the world's finest and most modern factories. Every Shasta is built according to Code. Construction standards are the highest. Our experienced artisans do not work on a piece-work basis, so our workmanship is unexcelled. We build our own chassis. We use thicker aluminum, better insulation, more glue and screws. You will enjoy many years of happy, healthy, carefree recreation with your Shasta.

**ALL OF US MUST RELAX FROM TIME TO TIME.** The average family, if travelling via the hotel or motel route, and having meals out, must expect a minimum expenditure of \$40.00 per day. 10 days, \$400.00. At some places reservations must be made days in advance. Telephone calls must be made ahead and many motels have no vacancies after noon. With your Shasta, you may truly relax. Forget time schedules. Forget constantly packing, unpacking and tipping. Stay an hour, a day or a week. You are going to find

it wonderful not to have to "Check Out" at some particular time! You will go, or stop, as the spirit moves you. And best of all, you will now be able to do this not just once a year, but thruout the year — week ends, holidays, vacations. And you will always have your fun-time equipment with you!

**THE TRAVEL TRAILER PARK DIRECTORY IS A MUST.** It lists 2,500 beautiful parks thruout the country that welcome the travel trailerist with outstretched arms. Just fill out the card you will find in your Shasta instruction envelope, mail it in to us and we will send you the book with our compliments. You will see more Shastas one the road and in parks than any other travel trailer. You will enjoy the warm feeling of comraderie that exists between members of the "Shasta Fraternity." Our 400 dealers thruout America and Canada will be happy to meet and greet you. You will meet and enjoy new friends wherever you go! So here's to a wonderful new way of satisfaction and enjoyment in God's out-of-doors with all the comforts of home. Have fun! The tips that follow will help you do just that thing.



# MORE PEOPLE BUY *Shasta* THAN ANY OTHER TRAVEL TRAILER!...

**YOUR TRAILER, LIKE YOUR CAR, REQUIRES OCCASIONAL ATTENTION**, tho not nearly as much. During the first fifty miles of trailer travel, remove the hub caps and tighten the lug nuts at least a couple of times. Although completely tightened at the factory, they frequently become loose while the base of the nut seats and adjusts itself to the lug hole of the wheel. So check this from time to time.

**TIGHTEN THE U-BOLTS** which secure the springs to the axle, and the body bolts securing body to chassis, periodically.

**REPACK WHEEL BEARINGS AT LEAST EACH 5,000 MILES.** A little oil on your hitch ball will keep it from squeaking.

**MOST TRAILERS USE BUTANE OR PROPANE GAS**, known as LPG (for liquified petroleum gas). This gas is used for heating, lighting, cooking and refrigeration. Under pressure, the gas is liquified and occupies little space. The gas pressure delivered to the lines is controlled by a valve on top of the storage tank. When your gas tank is first filled, be sure to have all connections checked by brushing on a solution of soap and water. Bubbles will show up any leak. Butane will provide you more BTUs than propane. On the other hand, propane has a much lower "freeing" point and therefore is used more in colder climes. When you buy gas you usually get a mixture of the two. LPG is no more dangerous than natural gas. Due to road vibration, connections should be checked from time to time; not with a match, but with the soapy solution. Every Shasta leaves the factory with all gas couplings tight and tested for leakage under pressure, and Shasta uses only name brand appliances which are either UL or AGA approved.

**EVERY SHASTA GAS-BOTTLE** comes equipped with a 10% valve to prevent overfilling. The regulator reduces gas pressure which is high in the tank to a low safe 6½ oz. per square inch pressure suitable for the appliances. The regulator is attached to the shut-off valve on the tank. LP gas produces water when burning, tho natural gas produces even more. Shasta appliances are vented, avoiding condensation problems. However, due to the restricted space in any travel trailer, some ventilation is recommended.

**MOST SHASTA TRAILERS ARE EQUIPPED WITH GAS REFRIGERATORS.** They are noiseless. We believe we use the finest on the market today — the Astral. More of this make are in use than any other. It is important for efficient operation of a gas refrigerator that the unit be level. Check level of refrigerator by placing a small spirit level on the ice cube tray shelf, being sure the shelf is clean of frost or ice. Level front to back and side to side. Light stabilizing jacks carried in the luggage compartment and placed under the two main steel frame channels are helpful, particularly if you will be at one place for several days. When parking during extremely hot weather, it is advisable to let the gas refrigerator side of the trailer be the shady side. You will find a Guarantee Registration Card in your Astral. Be sure to fill it out and mail to Morphy-Richards, Inc., 128 Ludlow Ave., Northvale, New Jersey. They will send you their National Service Network Booklet and Service Credit Card.

**ELECTRIC BRAKES** are, by far, the most popular trailer brakes on the market today. Shasta uses the Kelsey-Hayes. No break-in is required. Many states require that a trailer weighing over 1,500 lbs. be equipped with brakes. We agree with this, since a car's brakes are engineered to handle the car — not the car and a trailer. By the same token, your Shasta's brakes should not be expected to stop the trailer **and** the car. So, both should be used. Preferably, the trailer brakes should be applied slightly in advance of the car's brakes. This is especially true on icy roads, so that the trailer will not jack-knife. A good rule to follow in trailering is this; start slowly, and stop slowly. We are out to have fun and relax. A few seconds more or less won't make any difference in our arrival time! Kelsey-Hayes supplies a device that may be installed on the car to operate electric brakes from the foot pedal of the car. These automatic braking devices also have a manual operation lever. You should be able to operate the trailer brakes independent of the car brakes. Most cars today have 12 volt batteries, and your Shasta (except the Compact) is equipped with 12 volt brakes. In some instances the use of a Kelsey-Hayes selective resistor, # 41149, is advised. If you did not find your Kelsey-Hayes manual in your Shasta, write Kelsey-Hayes Co., 38481 Huron River Drive, Romulus, Michigan.



Green - Ground  
Yellow - Hot

**SHASTA WIRING COLOR CODE.** GREEN WIRE: clearance lights, also tail lights. BROWN WIRE: stop and right turn directional signal. RED WIRE: stop and left turn directional signal. See diagram attached to wall inside of cabinet.

**SELF-CONTAINED SHASTAS** include a large capacity pressurized steel cylindrical water tank, a marine type toilet, and an odorless vented waste septic or holding tank. In filling the empty water tank, a city water pressure inlet hose will compress the air at the top of the tank. As the water is expelled the air pressure will drop. Therefore, carry a small bicycle pump with you. In filling the tank thru the filler spout when far from civilization, leave some room at the top of the tank into which air will be pumped.

**THE TOWNSEND TOILET** is strong, light, saves space and minimizes the usage of water. An instruction sheet is put in each Shasta in which the Townsend toilet is installed. If for any reason you did not get this, please write Townsend Products Corporation, 27 Litchfield Street, Rochester 8, New York.

**SHASTA'S HOLDING or SEPTIC TANKS** are made of heavy gauge galvanized steel, or fiberglass impregnated with a high impact resin. To empty your holding tank, unscrew the plug at the end of the drain and screw in a threaded 3" hose adapter with drain hose attached. The drain hose is carried in your Bumper Carrier. After connecting the other end of the drain hose to a sewer outlet, rotate the drain valve handle counter clockwise to disengage the lock then pull straight out. The result is a thorough, quick release of the tank contents. You may, of course, empty your holding tank at any trailer park where you may be spending the night. In addition, there are now sanitary disposal stations across the land. 950 of them are listed in the Travel Trailer Park Guide mentioned elsewhere in these instructions.

Prime the holding tank with a gallon of water at the start of each trip. If you "Drop Anchor" for extended periods at trailer parks, it is better to drain your holding tank periodically after it has approached capacity rather than to open, and leave open, the holding tank valve. At this draining time you may wish to flush out the system, there being no water limitations.

**SHASTA'S DISPOSAL SYSTEM HAS A TERRIFIC ADVANTAGE** over that of many other travel trailers. While all fluid leaves the central 3" outlet drain, the contents of the holding tank is drained **independently**. Imagine yourself parked under a towering pine tree adjacent to a trout filled stream. A slight depression in the pine needles under the central drain will allow the clean water from (in the case of the 20'

DELUXE) your shower, lavatory and twin sinks to help water that tree. Your 47 gallon holding tank would permit you to remain at this idyllic spot for many days before having to return to civilization to empty your tank. So many travel trailers do it the easy way, the cheap way — drain everything into the holding tank. So in a few days their fun time is cut short.

**ALL SELF-CONTAINED SHASTAS HAVE LARGE CAPACITY** pressurized water systems. In the 20' DELUXE, the 18' SUPER and the 16' CONTINENTAL (SCS), this is 41 gallons. These models provide for drainage of hot and cold water lines during freezing weather thru special drain lines and petcocks (an almost exclusive with Shasta). In addition, every Shasta water tank has a drain. When draining, open all faucets.

**SHASTAS EQUIPPED WITH B. F. GOODRICH FIRST LINE TIRES.** Check your pressure when the tires are cool, before starting on a trip. Recommended air pressure: 20' DELUXE, 60 Lbs. 18' SUPER, 50 Lbs. All 16' models, 30 Lbs. Compacts, 28 Lbs.

**THE BOWEN HOT WATER HEATER** is the finest in the industry, we believe. It is more trouble-free, by far, than any other water heater we have ever used, including the tankless type. A simple operation instruction plate is affixed to the outside vent. In addition, an operation booklet is placed in the Shasta instruction envelope. The manufacturer: Bowen Water Heater Division, Wixom, Michigan. On the West Coast: 5601 Valley Blvd., Los Angeles 32, California.

**SPACE HEATER** instruction sheets are placed in the Shasta instruction envelope. The Glen Aire heater by Duo-Therm is supplied by Duo-Therm Division, Motor Wheel Corporation, LaGrange, Indiana. On the West Coast: Motor Wheel Corporation, Glen Aire Division, 601 S. East Street, Anaheim, California.

**INSTRUCTION SHEETS ON THE MAGIC CHEF RANGE** are placed in the oven. If for any reason they are missing, write Magic Chef, Inc., Pan Pacific Division, 2053 E. 38th Street, Los Angeles 58, California.

**THE HOLIDAY RANGE INSTRUCTION FOLDER** is placed in the oven. The manufacturer: Sattler Mfg. Corp., 9313 Sorenson Avenue, Santa Fe Springs, California.

**FAYETTE PRECISION BUILT UNDERCARRIAGES** have set a high standard for years. They are far above the average. They cost considerably more, but are worth it. Notice the husky tubular axle, the finely machined spindles! Like Shasta, volume production permits better engineering and a finer product. Fayette Manufacturing Co., Fayette, Ohio.



**WINDOW ARE BY HEHR MFG. CO.** You will notice that your Shasta not only has more windows, but also more that open. Hehr Mfg. Co., 3333 Casitas Ave., Los Angeles, California; 1103 W. Pearl St., Chesaning, Michigan; 2140 7th St., Macon, Georgia; Hy. 81 & 24th St., Newton, Kansas.

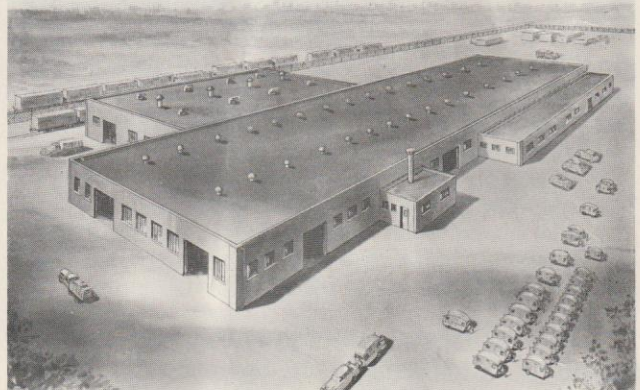
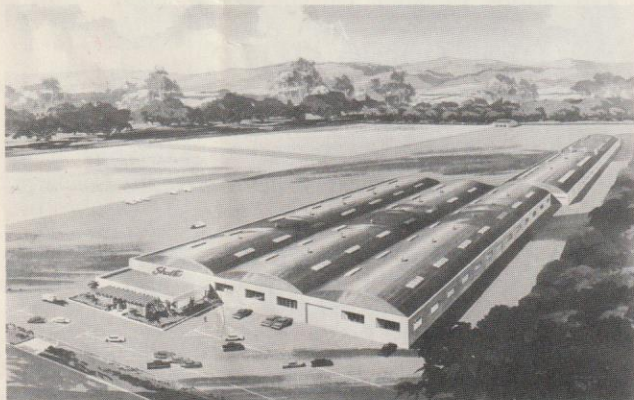
**BE SURE TO DISCONNECT BEFORE DEPARTING.** Your electrical cord, water hose, waste drain hose (put in combination bumper-drain hose container). Check clearance, tail and stop lights. See that hitch is properly attached to ball by cranking up the coupler jack until both front of trailer and rear of car are raised a foot above normal. Having thus ascertained that the coupler is securely locked, reverse the process, remove caster wheel and crank shaft up as far as possible. Be sure step is retracted. Pack wheel chocks away. Lock your door and close all windows and vents for travelling.

**HAPPINESS HINTS.** A folding canvas awning adds a great deal to the festive travel occasion. Every Shasta has a full length awning rail to accommodate an awning. A few folding canvas chairs should be included. Plastic dishes and glasses are advisable. Ice wrapped in newspapers will last longer. Shasta shelves provide a front guard to prevent contents falling out when the door is opened, but additional protection will be assured by a few beach towels placed within the cupboard prior to an extensive trip. Extension side view mirrors are a must. Treat the inside of your Shasta as you would your house. To clean

the walls use any light detergent. Most of the window screens are removable for easier cleaning. The aluminum exterior has an almost indestructible baked enamel finish. Treat it the same as you would your car. A small Bar-B-Que and a sack of charcoal should go along. Above all else, take your camera and plenty of film. You will record scenes of happiness and wholesome pleasure available only to true devotees of outdoor living.

**FINALLY,** remember this: "All the World Loves a Lover," and also a Travel Trailer Enthusiast. People like people who like clean, outdoor fun and healthy recreation. But, let's not take advantage of this public acceptance. Always leave your overnight camp site immaculate. If you are leisurely cruising a beautiful back country road and enjoying the beauties of nature, and a few cars (in a hurry) come up behind you, let them pass at the first opportunity. They will appreciate it, and will probably wind up a member of your Shasta Fraternity. Just apply the Golden Rule. It will come back to you one hundred fold. Travel Trailer people are the Cream of the Crop. They are the most friendly people on earth. They will be happy to induct you, without cost, into the know-how of travel trailering. They are having more fun than they ever had before, and they want to share it with you. We could not possibly have covered the whole field in this short treatise. So do not hesitate to ask your fellow travel trailerist any question that comes to mind. They will share their knowledge with you. Again we say — Have fun!

## SHASTA TRAILERS



- NORTHRIDGE, CALIFORNIA ■ GOSHEN, INDIANA ■ LEOLA, PENNSYLVANIA
- BATTLE GROUND, WASHINGTON ■ GRAPEVINE, TEXAS